



PD South
Open-End Projects

Locations

- Location 1 SR 1 & Hudson Road
- Location 1A SR 1 & Cave Neck Road
- Location 2 SR 1 & Oyster Rocks Road
- Location 3 SR 1 & SR 5
- Location 4 US 113 & Wood Branch Road
- Location 5 US 13 & Webb's Lane
- Location 6 US 113 & SR 24
- Location 7 SR 10 & Sorghum Mill
- Location 8 US 13 & Redden Road
- Location 9 SR 1 & Five Points
- Location 10 SR 1 & Kings Highway
- Location 11 SR 1, Bridge 3-155 Median Crossovers
- Location 12 Robinson Drive
- Location 13 US 9 & Minos Conaway Road
- Location 14 SR 1 & Old Landing Road

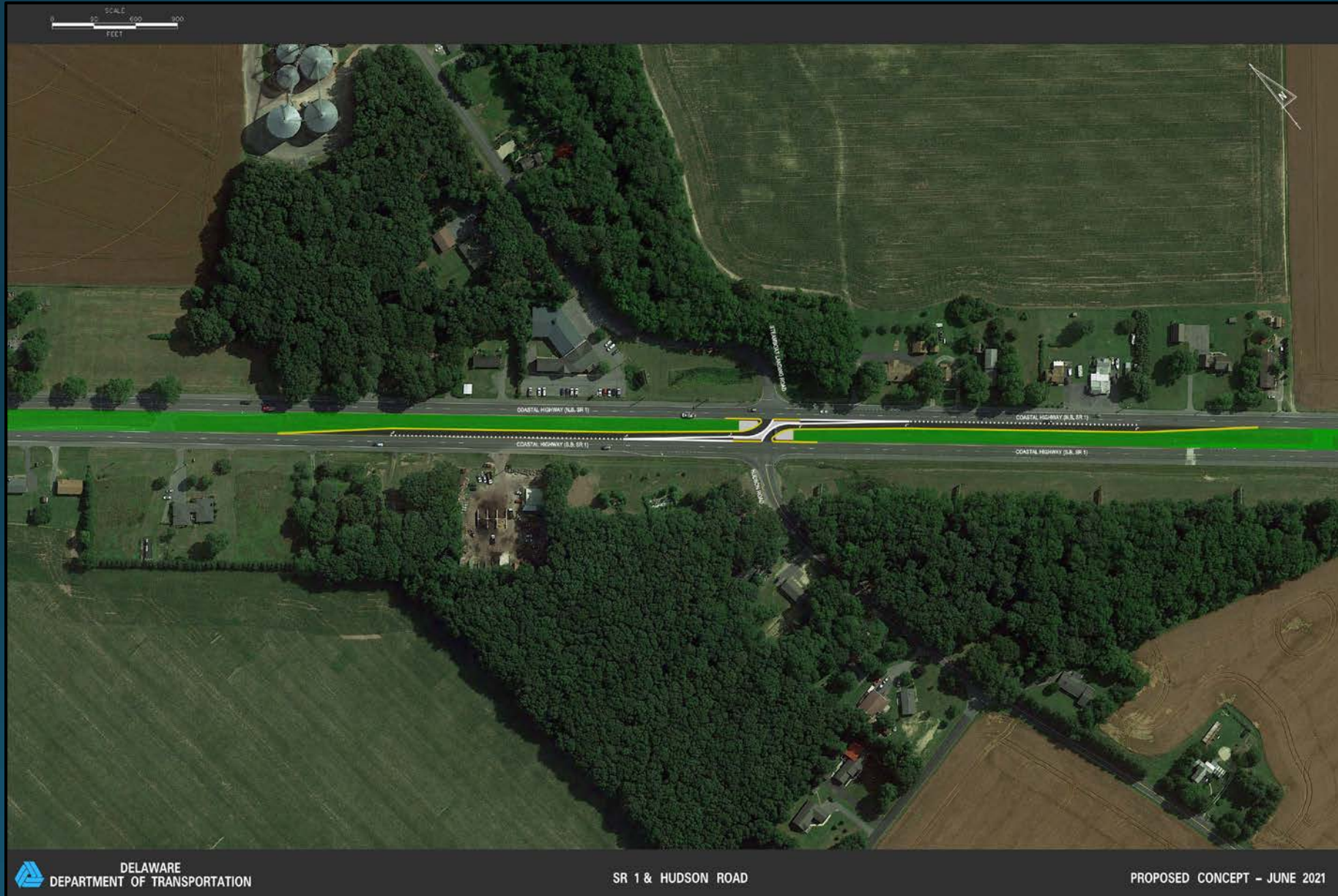
Location 1 – Existing Conditions

SR 1 & Hudson/Steamboat (S258)



Location 1 – Proposed Conditions

SR 1 & Hudson/Steamboat (S258)



Location 1A – Existing Conditions

SR 1 & Cave Neck Road (S88)



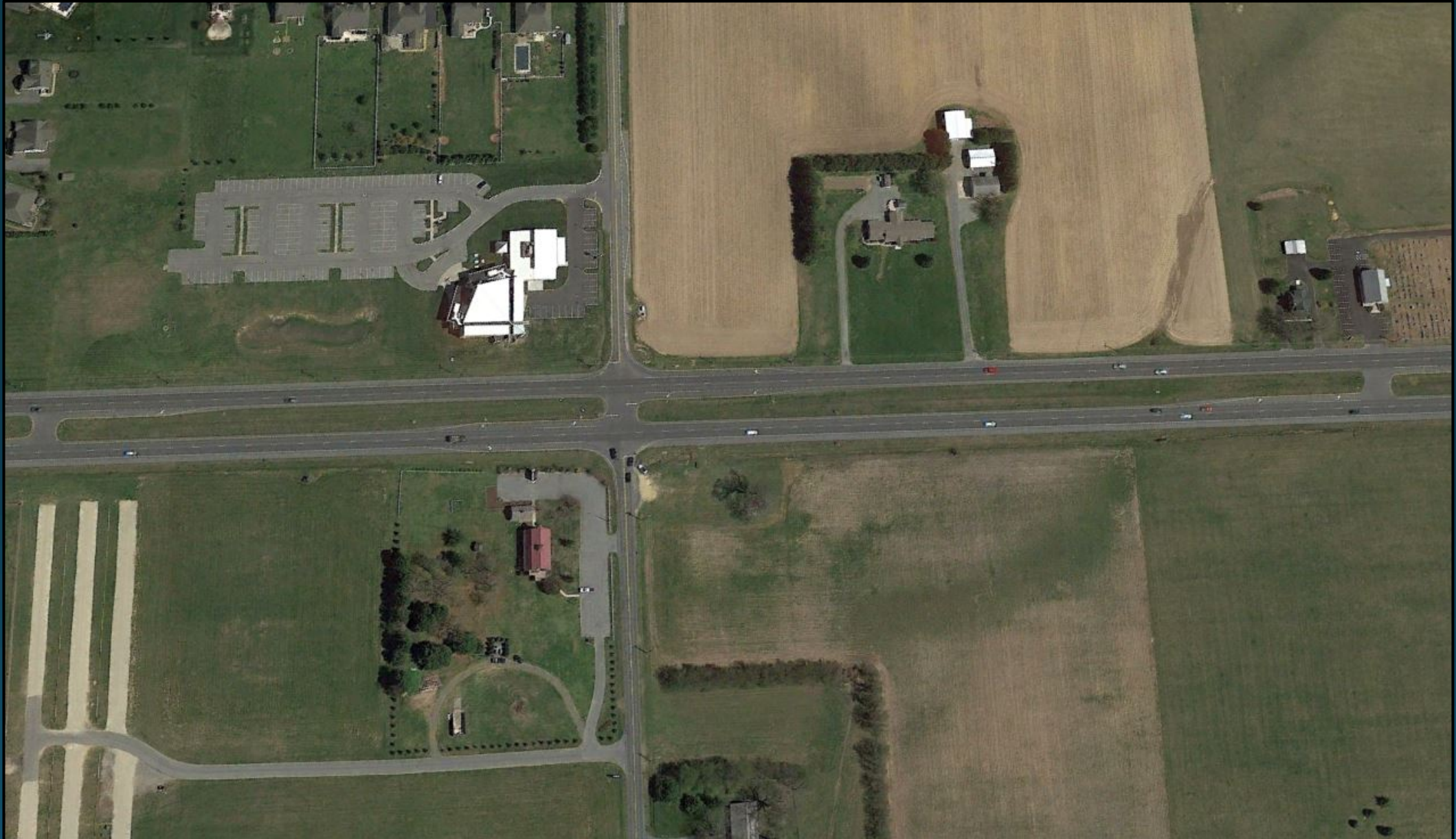
Location 1A – As-Built Conditions

SR 1 & Cave Neck Road (S88)

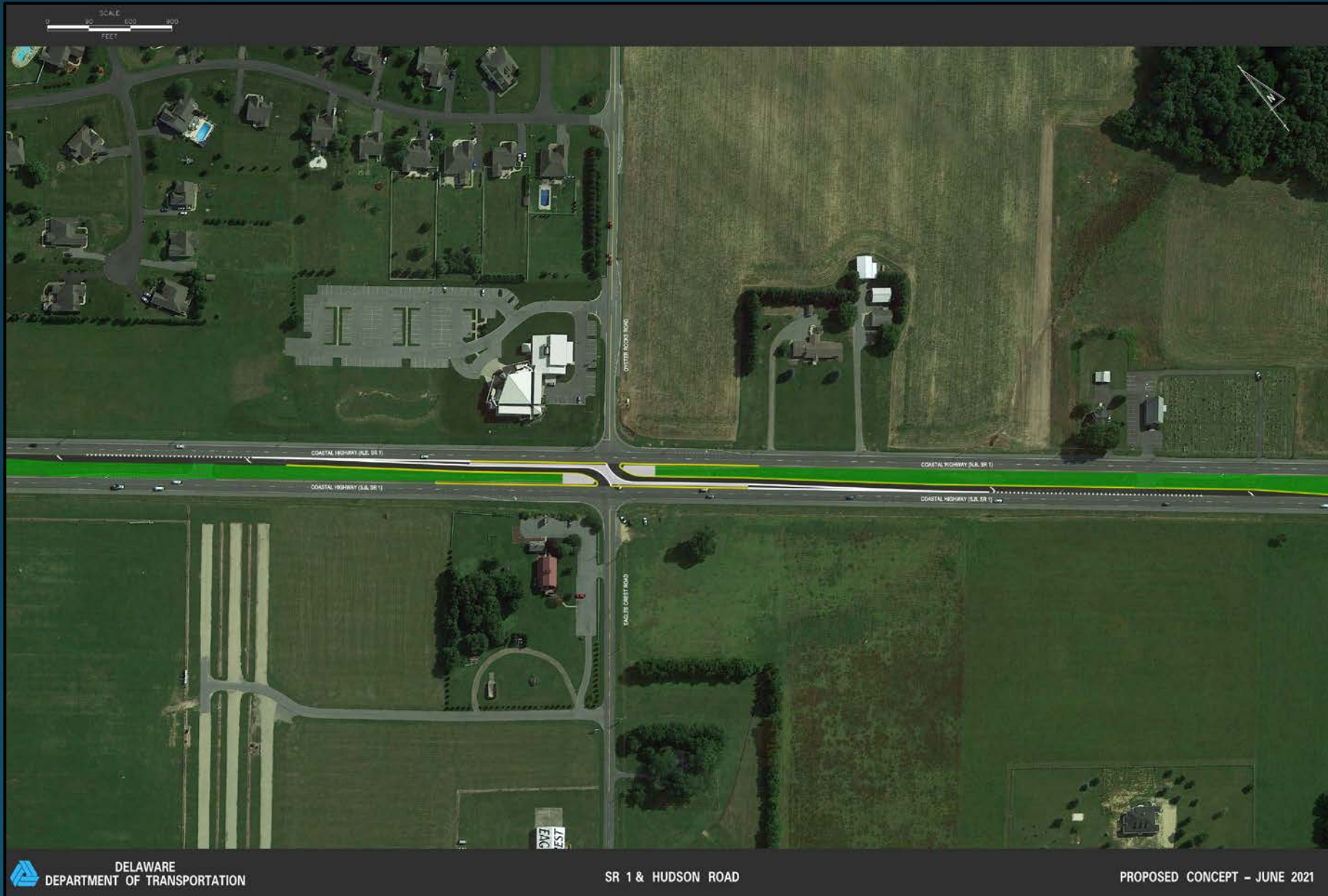


Location 2 – Existing Conditions

SR 1 & Eagle Crest/Oyster Rocks (S264)



SR 1 & Eagle Crest/Oyster Rocks (S264)



Location 3 – Existing Conditions

SR 1 & SR 5 – Union Street (Milton)



Location 3 – As-Built Conditions

SR 1 & SR 5 – Union Street (Milton)



Location 4 US 113 & Wood Branch Road

- Georgetown
- Previous Capital Project – HSIP Location
- Opposition during Project Development
- 2014 – Tubular Markers Installed
- 2015/2016 – Traffic Signal
- 2018 – Re-Design Effort Began



Location 4 – Existing 2012

US 113 & Wood Branch Road



Location 4 – Existing 2014

US 113 & Wood Branch Road



Location 4 – Existing 2017

US 113 & Wood Branch Road



Location 4 US 113 & Wood Branch Road

As-Built Conditions

- Left Turn Lane Lengthened
- Typical Section Cleaned Up
- Consistent Median
- Spot Improvements



Location 4 US 113 & Wood Branch Road

As-Built Conditions

- Left Turn Lane Lengthened
- Typical Section Cleaned Up
- Consistent Median
- Spot Improvements



Location 5 – Existing Conditions

US 13 & Webbs Lane (K192)



Location 5 – As-Built Conditions

US 13 & Webbs Lane (K192)



Location 6

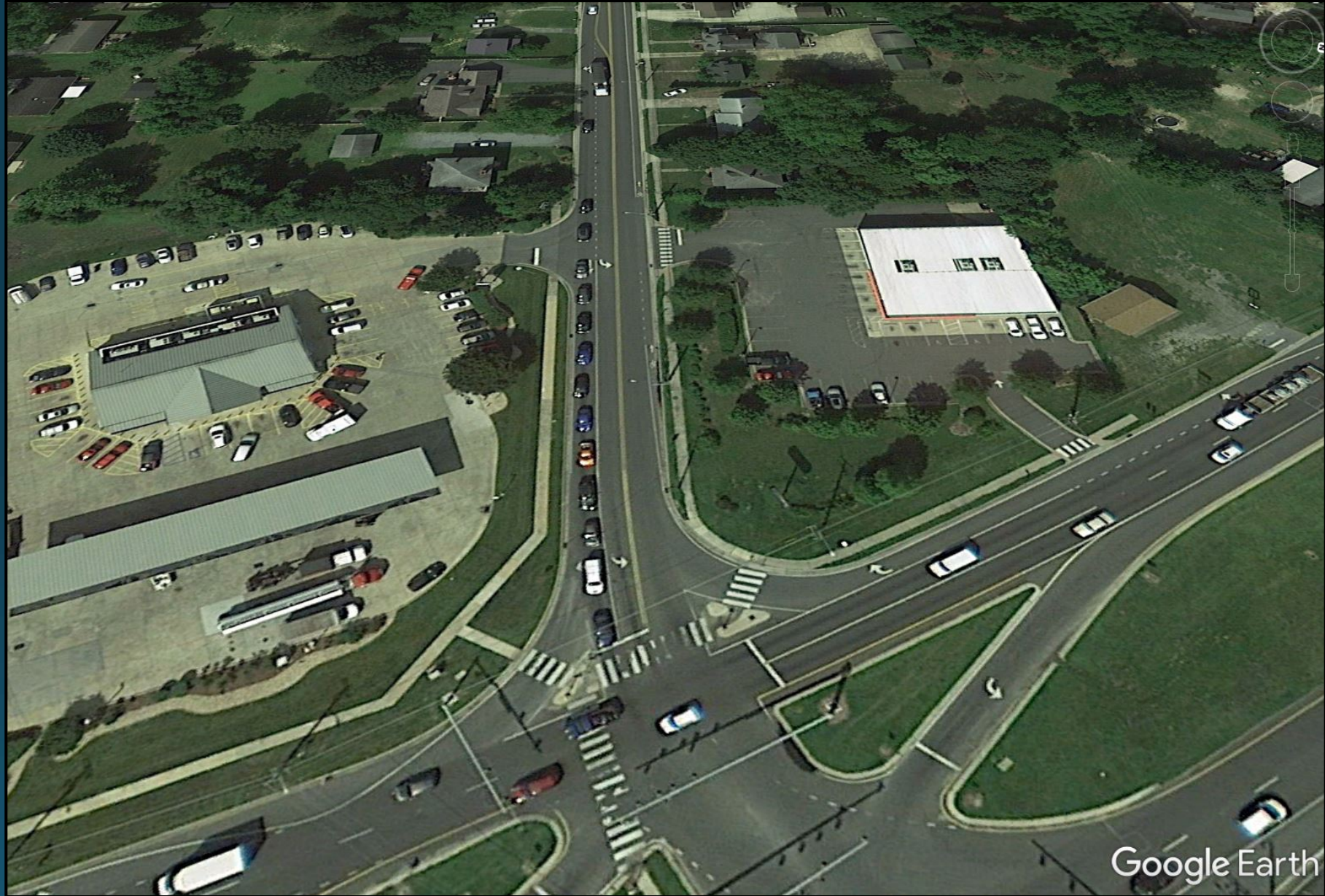
US 113 & SR 24

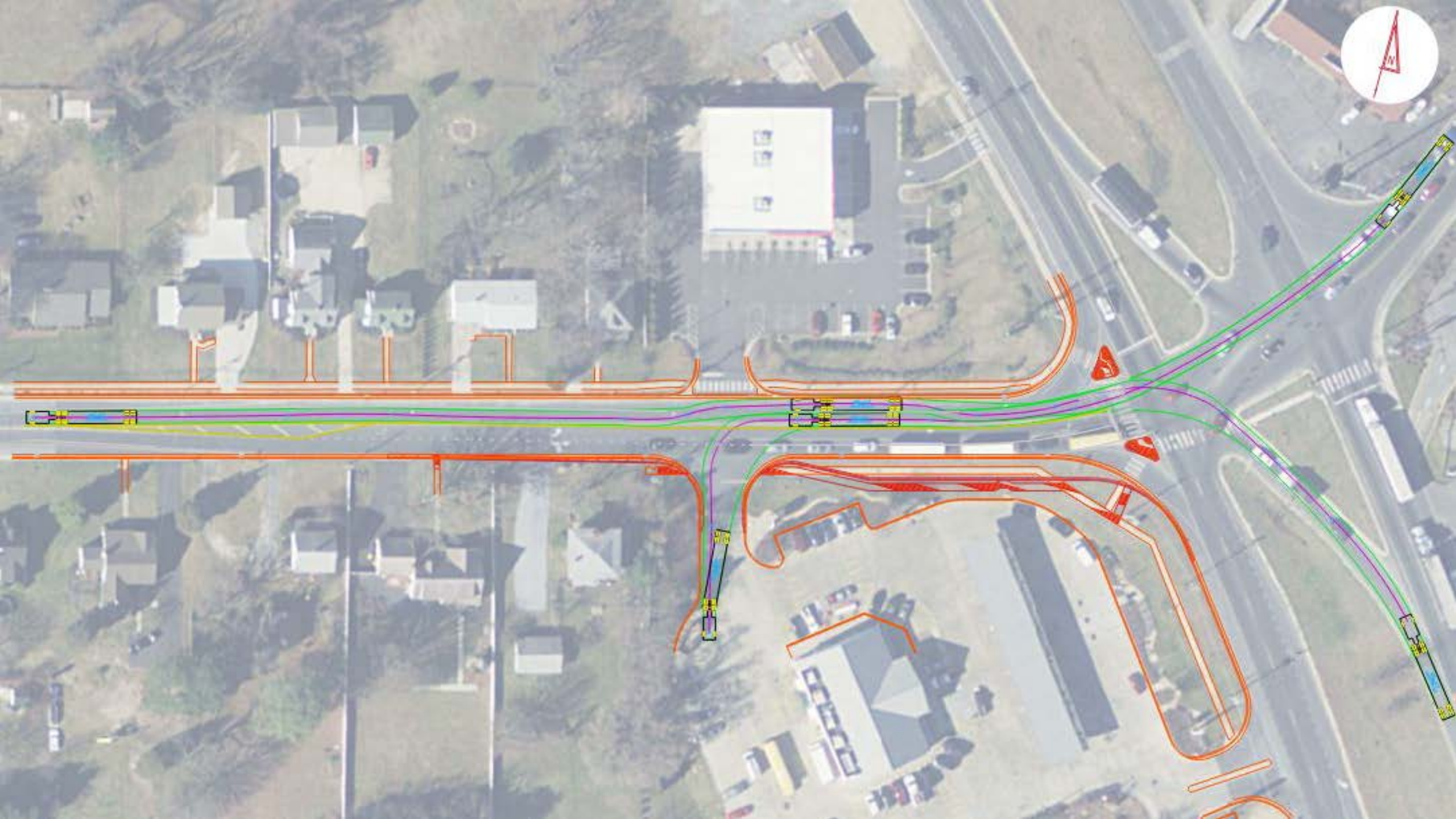
- Millsboro
- Originated from US 113 North/South Study
- Included Right-of-Way Acquisition Phase



Location 6 – Existing Conditions

US 113 & SR 24





Location 6 – As-Built Conditions

US 113 & SR 24



Location 7 – Existing Conditions

SR 1 & Sorghum Mill Road (K356A)



Location 7 – As-Built Conditions

SR 1 & Sorghum Mill Road (K356A)



Location 8 US 13 & Redden Road

- Bridgeville
- Left-Turn Lane Extension
- Alternative to Route 404
- US 113 (North of Georgetown)
constructed in 2018



Location 8 – Existing Conditions

US 13 & Redden Road



Location 8 – As-Built Conditions

US 13 & Redden Road



Locations 9,10 & 14

Coastal Highway Intersection Improvements

- Lewes
- SR 1 & Five Points
- SR 1 & Kings Highway
- SR 1 & Old Landing





SR 1 & Five Points U-Turn

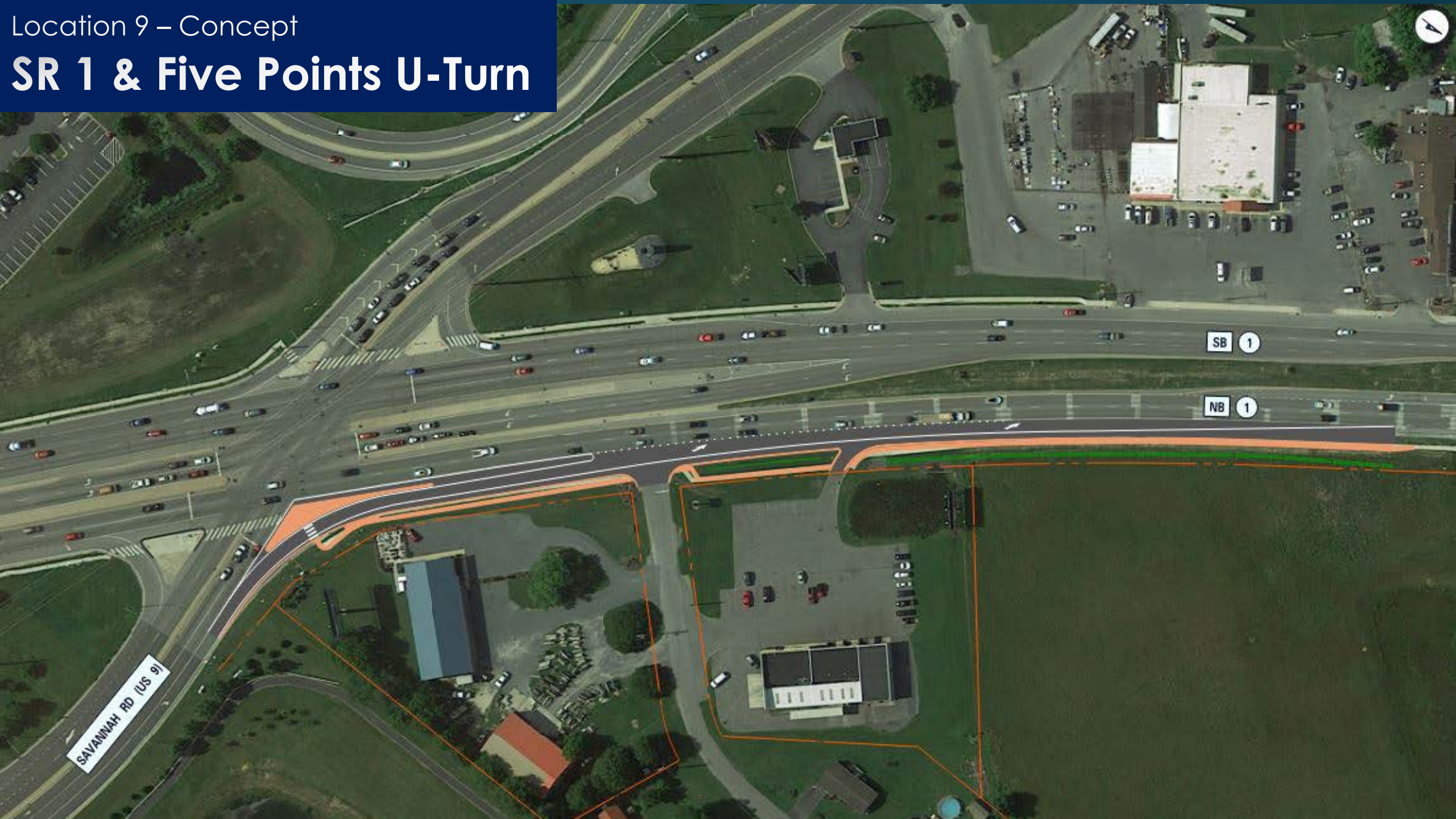
SR 1 & Kings Highway

SR 1 & Old Landing Road

3D



Location 9 – Concept
SR 1 & Five Points U-Turn



Location 10 – Concept
SR 1 & Kings Highway



Location 14 – Concept
SR 1 & Old Landing Road



Location 11 – Existing Conditions

SR 1, Bridge 3-155 Median Crossovers



Location 11 – As-Built Conditions

SR 1, Bridge 3-155 Median Crossovers



Location 12 – Existing Conditions

Robinson Drive (Rehoboth)



Location 12 – As-Built Conditions

Robinson Drive (Rehoboth)



Location 13

US 9 & Minos Conaway Road

- Lewes
- Right-Turn Lane
- Future Capital Project
(FY 24 Design Start)
- SR 1 & Minos Conaway
GSI Detour Route



Location 13 – Existing Conditions

US 9 & Minos Conaway Road



Location 13 – As-Built Conditions

US 9 & Minos Conaway Road



Contracts Used – Finance Issues

- T201904003 Open-End Construction Services, Kent & Sussex County, Intersection Improvements FY20-FY22
Awarded January 2020 to Mumford & Miller Concrete, Inc.
- T202104004 State Child Project of Contract T201904003 Open-End Construction Services, Kent & Sussex County
- T201606301 Pave & Rehab Contract
George & Lynch
- T201606302 Pave & Rehab Contract
George & Lynch
- T201904302 SR1 at S264 & S258 Intersection Improvements
Currently in Design (Locations 1 & 2)
- T202204302 Coastal Highway Intersection Improvements
Currently in Design (Locations 9, 10 & 14)

Contracts Used – Duration Issues

DESCRIPTION

The improvements consist of furnishing all labor and materials for construction for various minor roadway projects throughout Kent and Sussex Counties by the assignment of tasks, and other incidental construction in accordance with the location, notes and details shown on the plans and as directed by the Engineer.

COMPLETION TIME

All work on this contract must be complete within 124 Calendar Days. The Contract Time includes an allowance for 18 Weather Days. It is the Department's intent to issue a Notice to Proceed such that work starts on or about February 24, 2020.

ARTICLE ONE. The **Contractor** shall and will provide and furnish all the material, machinery, implements, appliances, and tools, and perform the work and labor required to OPEN-END CONSTRUCTION SERVICES, KENT & SUSSEX COUNTY, INTERSECTION IMPROVEMENTS FY20-FY22 in Kent and Sussex County in the State of Delaware, as shown in the proposal, plans and specifications prepared by the **Department**, which proposals, plans and specifications are identified by the signature of the **Contractor** and the Secretary of the **Department** or designee and are hereby incorporated by reference as part of this contract. The **Contractor**, after the execution of the Contract and approval of the bond, shall begin work within ten (10) days from the Notice to Proceed, at such points as the Engineer may direct, and shall thereafter prosecute the work at such points and in such order as the Engineer may from time to time prescribe, and shall complete Tasks 3, 4, and 5 of the Contract on or before 124 Calendar Days. The Department will provide Calendar Day Completion timings for future Tasks.



Thank You!

Questions?